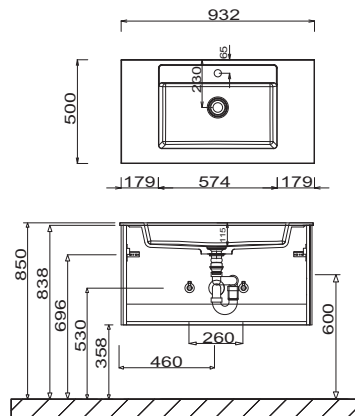
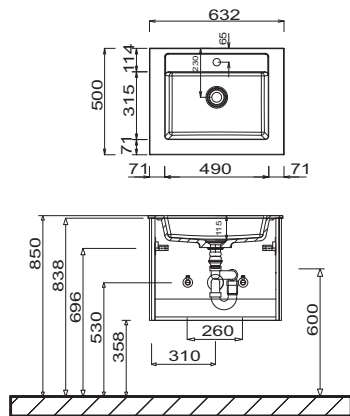


Program 072 - dimensional drawings

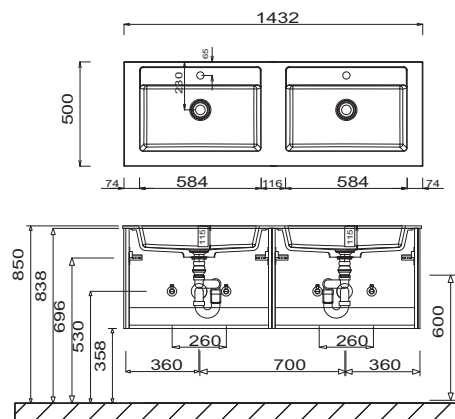
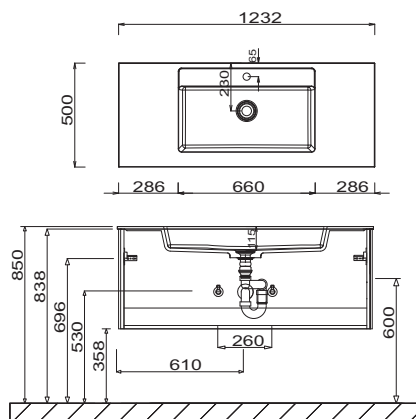
WMS/WGS 2306 61 + SET 386S 4G

WMS/WGS 2309 61 + SET 389S 4G



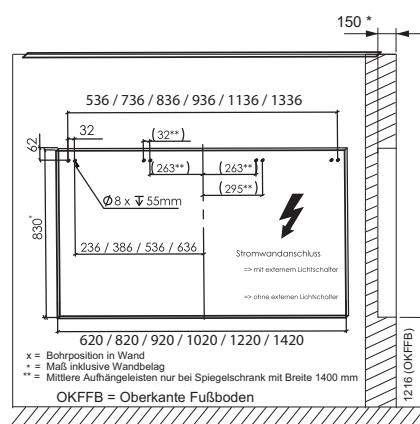
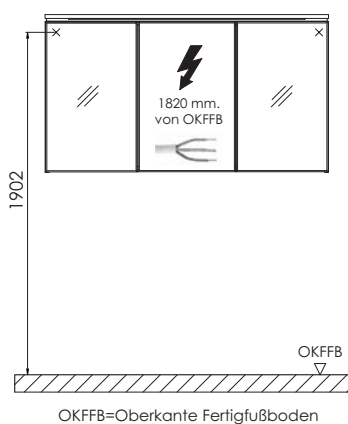
WMS/WGS 2312 61 + SET 382S 4G

WMS/WGS 234D 61 + SET 384S 4G



electrical connections for mirror cabinets

S2A 53xx E1, S2A 55xx E1



STONEPLUS:

The water temperature must not exceed 55° C / 131° F. Hair tinting lotions have to be removed in a few seconds, so that staining can be avoided.

Modifications:

Technical modifications (+/- 5mm) and flatness modifications (DIN 18202) are subject of the usual material-specific modifications for construction materials, based on DIN 18202.