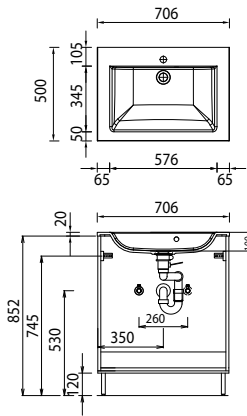
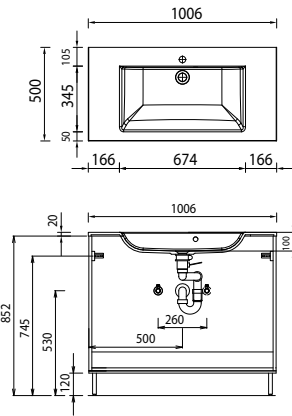


Program 057 - dimensional drawings

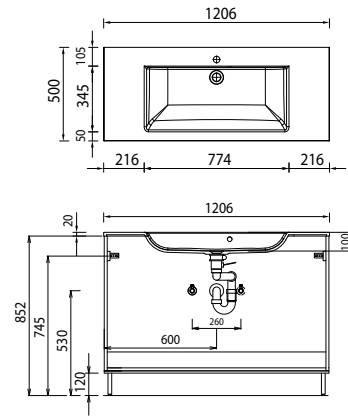
SET QU70 1



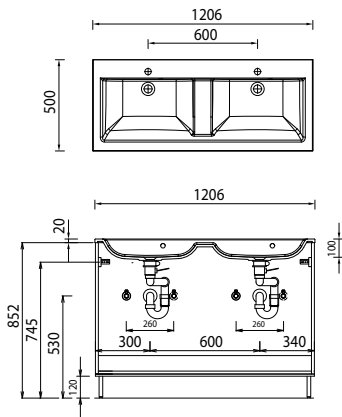
SET QU10 1



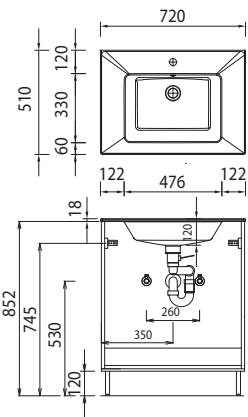
SET QU12 1



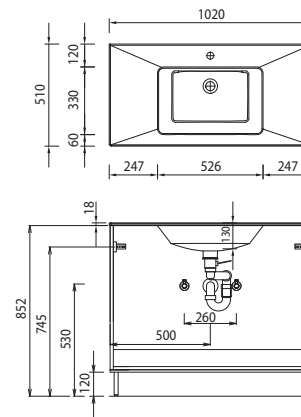
SET QU2D 1



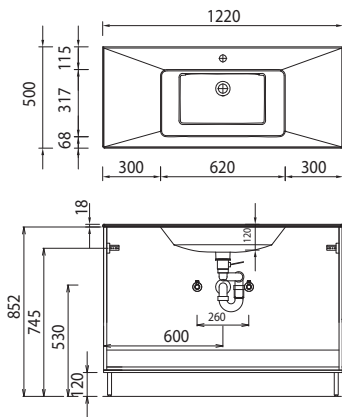
SET QU70 2



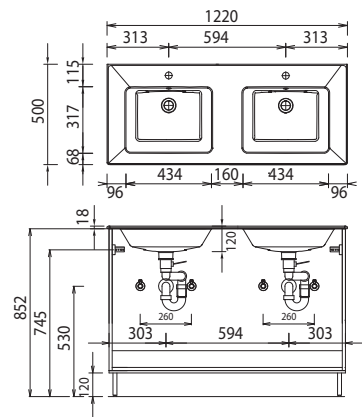
SET QU10 2



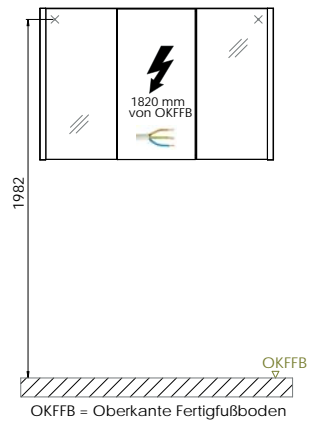
SET QU12 2



SET QU2D 2



electrical connections for mirror cabinets



For washing stands with fixing screws, the dimensions for boring must be drawn in on-site after the washing stand has been laid on the floor unit.

Cast mineral:

The water temperature must not exceed 55° C / 131° F. Hair tinting lotions have to be removed immediately, so that staining can be avoided.

Modifications:

Technical modifications (+/- 5mm) and flatness modifications (DIN 18202) are subject of the usual material-specific modifications for construction materials, based on DIN 18202.