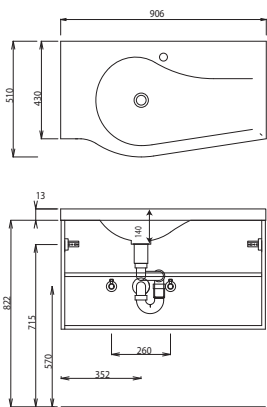
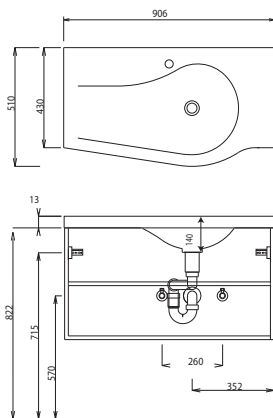


Program 026 - dimensional drawings

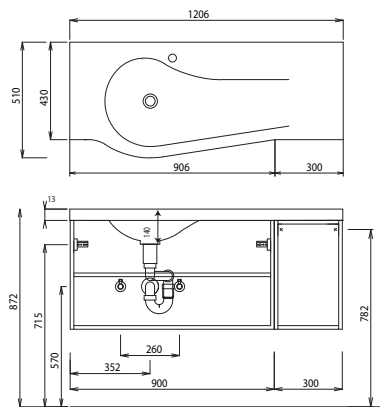
WGM 509R



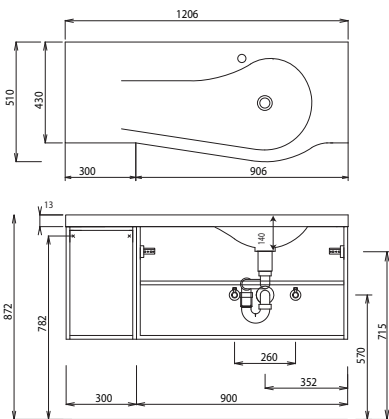
WGM 509L



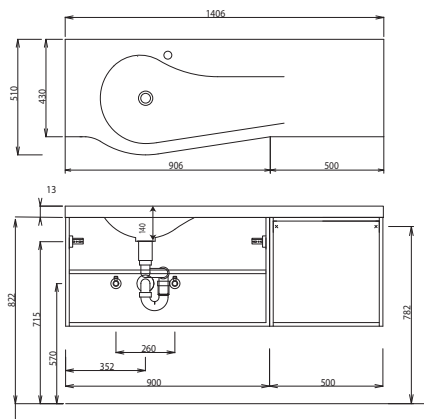
WGM 512R



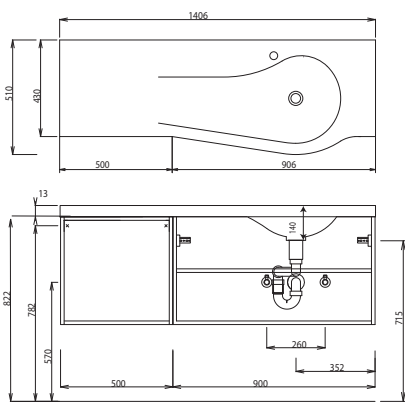
WGM 512L



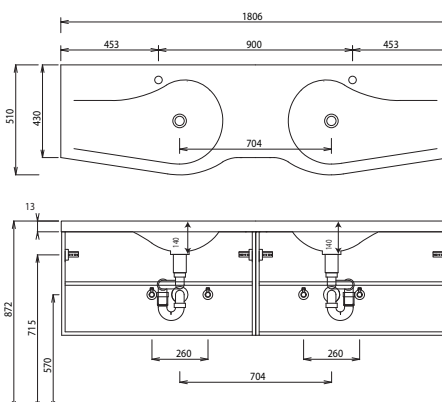
WGM 514R



WGM 514L



WGM 518



For washing stands with fixing screws, the dimensions for boring must be drawn in on-site after the washing stand has been laid on the floor unit.

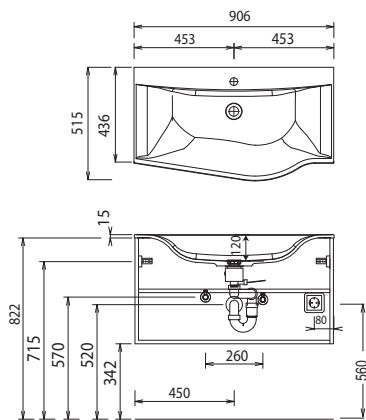
Washing stands without anchoring brackets have to be fixed on the wall and on the furniture-side with silicon! Cast mineral: The water temperature must not exceed 55° C / 131° F. Hair tinting lotions have to be removed immediately, so that staining can be avoided.

Modifications:

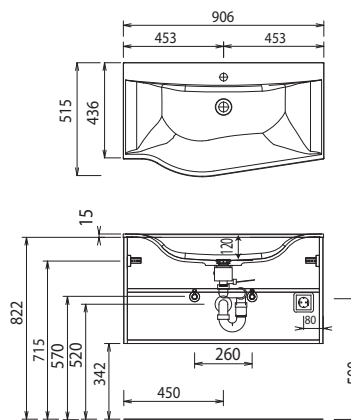
Technical modifications (+/- 5mm) and flatness modifications (DIN 18202) are subject of the usual material-specific modifications for construction materials, based on DIN 18202.

Program 026 - dimensional drawings

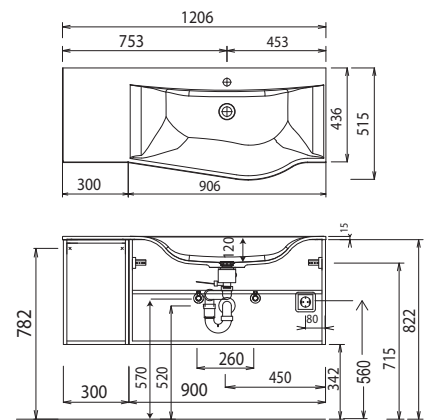
WMM 529L



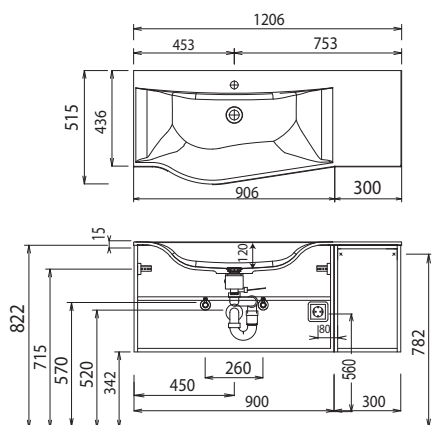
WMM 529R



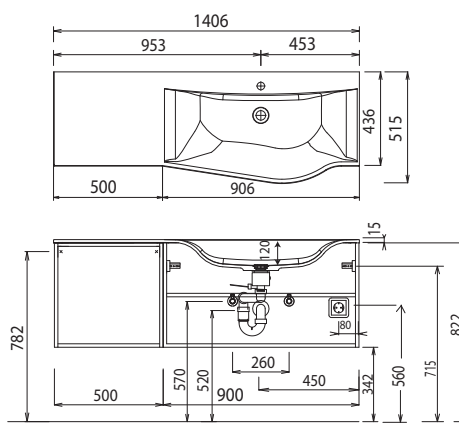
WMM 522L



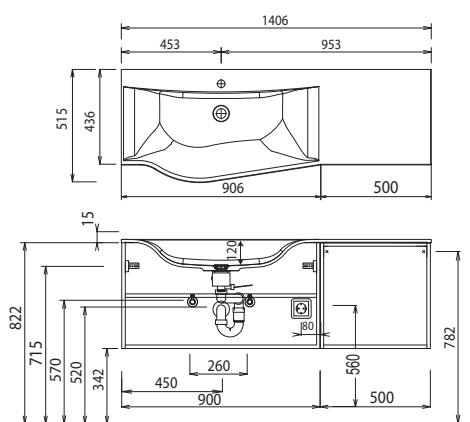
WMM 522R



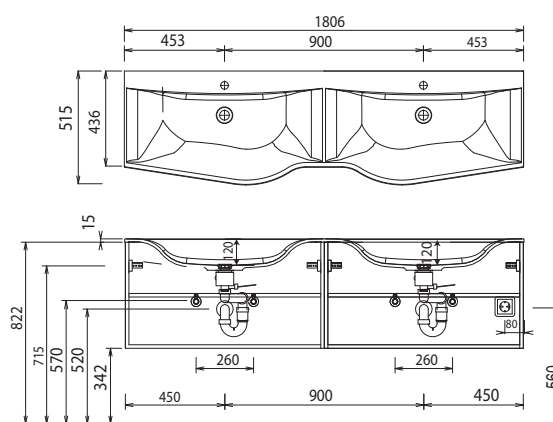
WMM 524L



WMM 524R



WMM 528D



For washing stands with fixing screws, the dimensions for boring must be drawn in on-site after the washing stand has been laid on the floor unit.

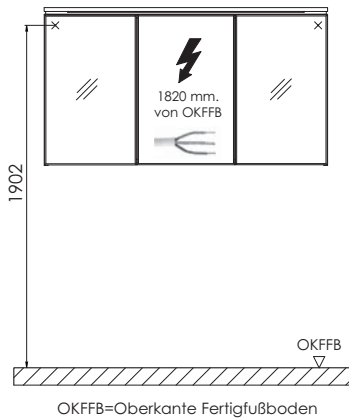
Washing stands without anchoring brackets have to be fixed on the wall and on the furniture-side with silicon! Cast mineral: The water temperature must not exceed 55° C / 131° F. Hair tinting lotions have to be removed immediately, so that staining can be avoided.

Modifications:

Technical modifications (+/- 5mm) and flatness modifications (DIN 18202) are subject of the usual material-specific modifications for construction materials, based on DIN 18202.

Program 026 - dimensional drawings

electrical connections for mirror cabinets



For washing stands with fixing screws, the dimensions for boring must be drawn in on-site after the washing stand has been laid on the floor unit.

Washing stands without anchoring brackets have to be fixed on the wall and on the furniture-side with silicon! Cast mineral: The water temperature must not exceed 55° C / 131° F. Hair tinting lotions have to be removed immediately, so that staining can be avoided.

Modifications:

Technical modifications (+/- 5mm) and flatness modifications (DIN 18202) are subject of the usual material-specific modifications for construction materials, based on DIN 18202.