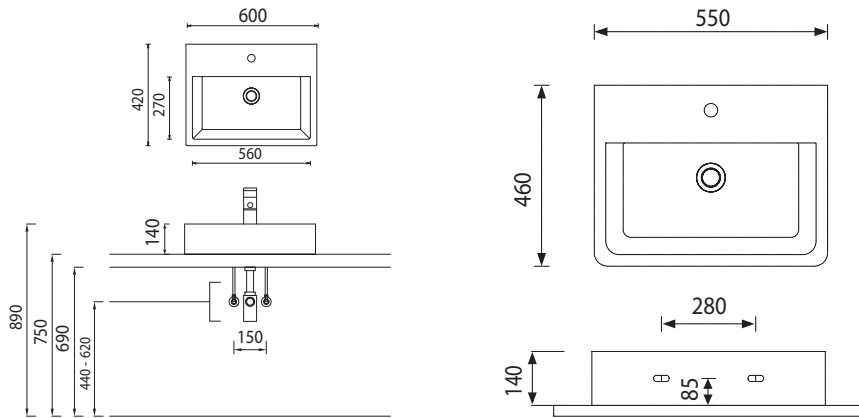


Program 053 - dimensional drawings

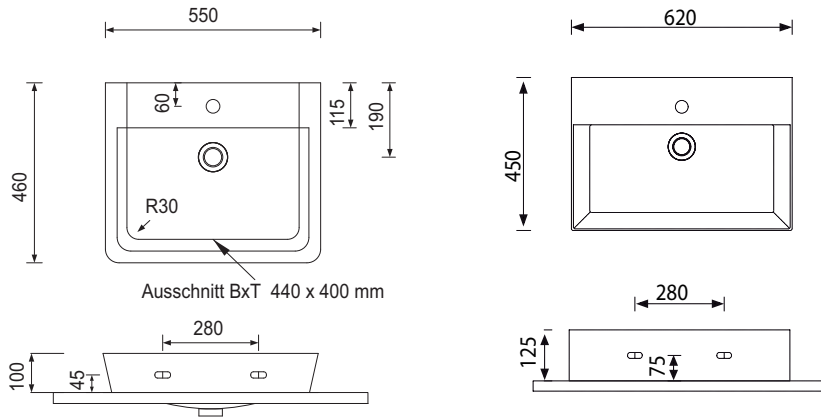
MEMENTO 2.0 WTA 0906

CUBE WTA 0705



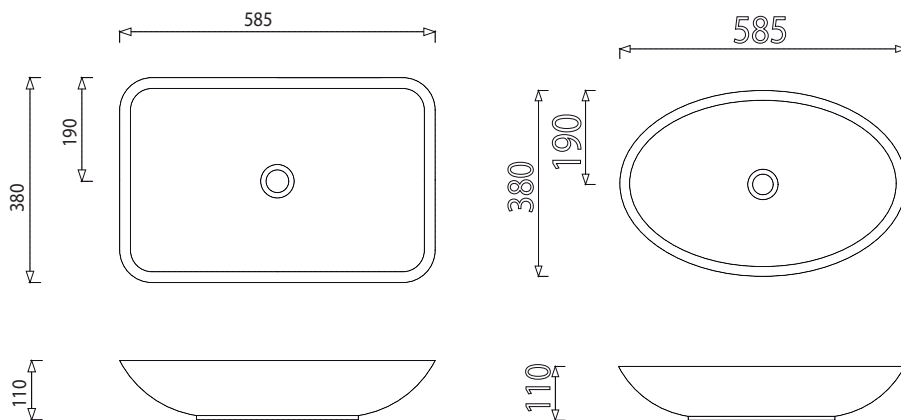
CONNECT AIR WTA 0805

Squared WTM 4806



LOOP WTA 0606

LOOP WTA 0506

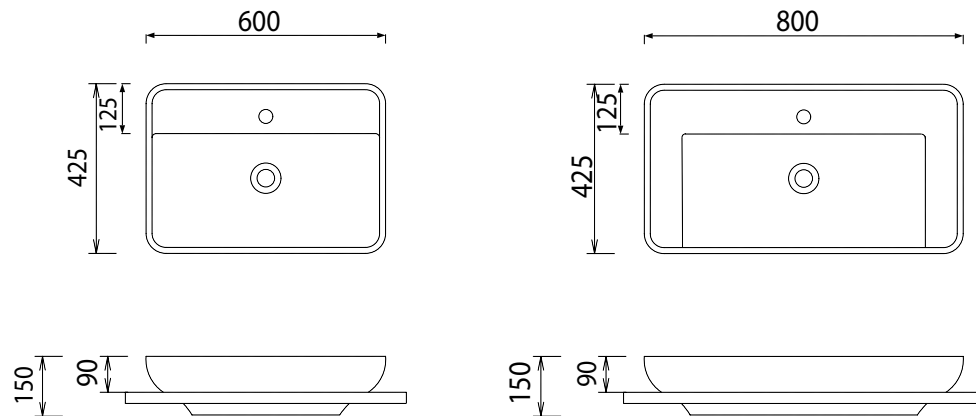


Modifications:
 Technical modifications (+/- 5mm) and flatness modifications (DIN 18202) are subject of the usual material-specific modifications for construction materials, based on DIN 18202.

Program 053 - dimensional drawings

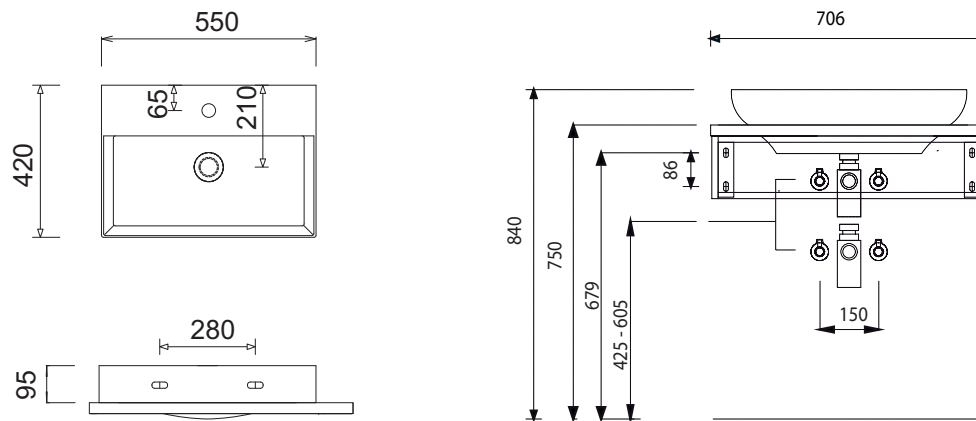
MELBOURNE WTA 1104

MELBOURNE WTA 1105



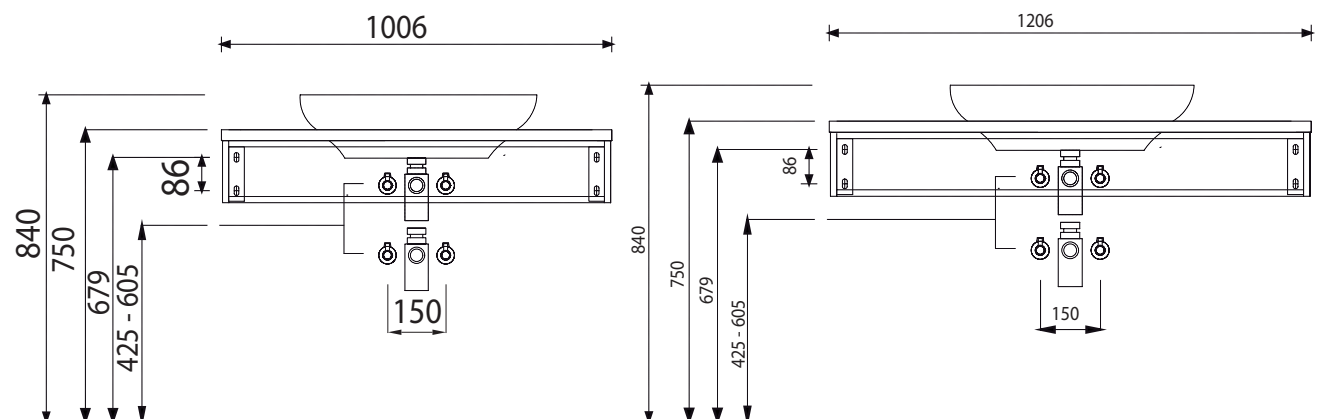
Málaga WTM 4255

WTA 1104 + WUA 1170 P4



WTA 1104 + WUA 1110 P4

WTA 1104 + WUA 1112 P4



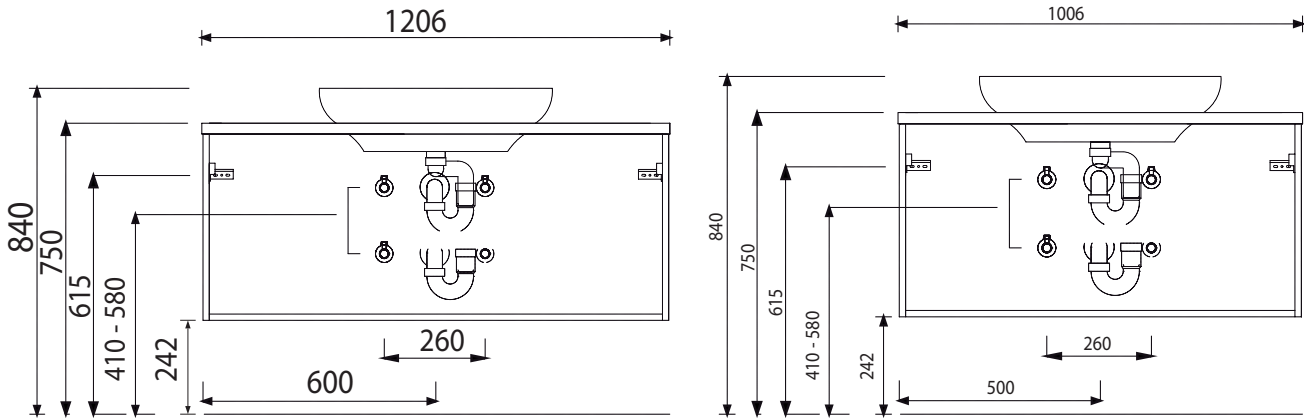
Modifications:

Technical modifications (+/- 5mm) and flatness modifications (DIN 18202) are subject of the usual material-specific modifications for construction materials, based on DIN 18202.

Program 053 - dimensional drawings

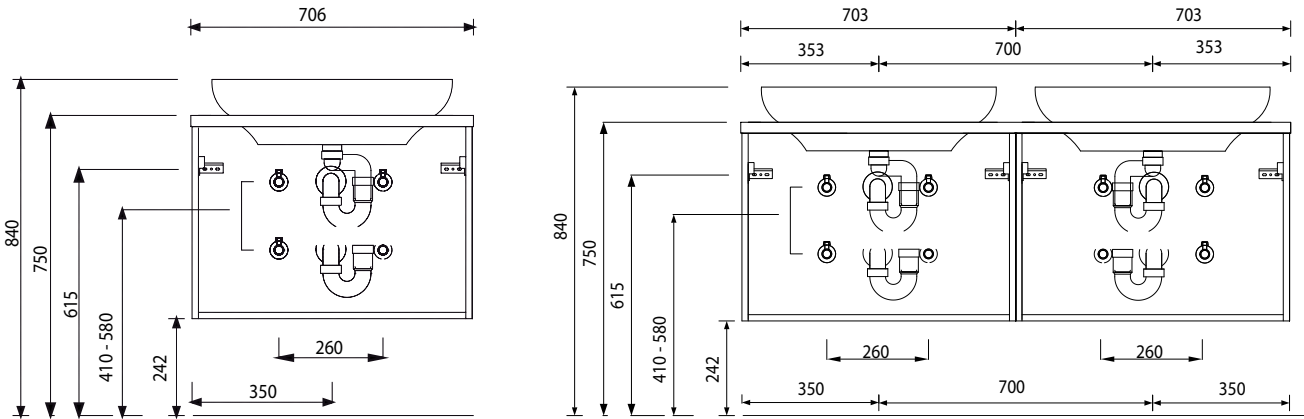
WTA 1104 + WUA 3312 P4

WTA 1104 + WUA 3310 P4

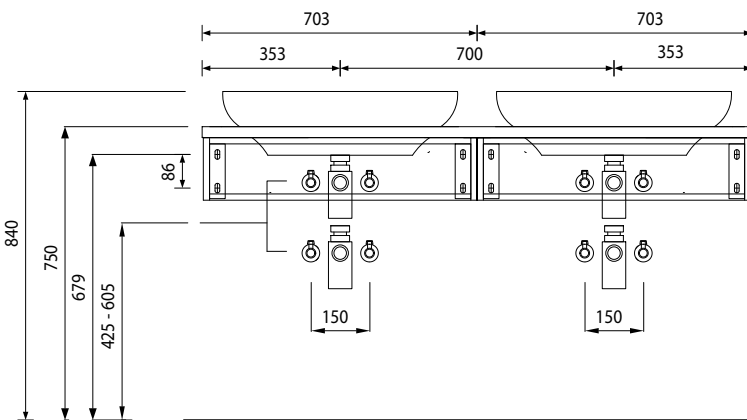


WTA 1104 + WUA 3370 P4

2 x WTA 1104 + 2 x WUA 3370 P4



2 x WTA 1104 + 2 x WUA 1170 P4

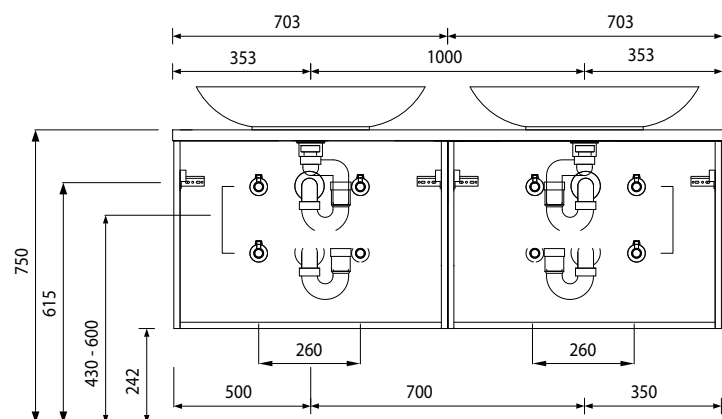


Modifications:

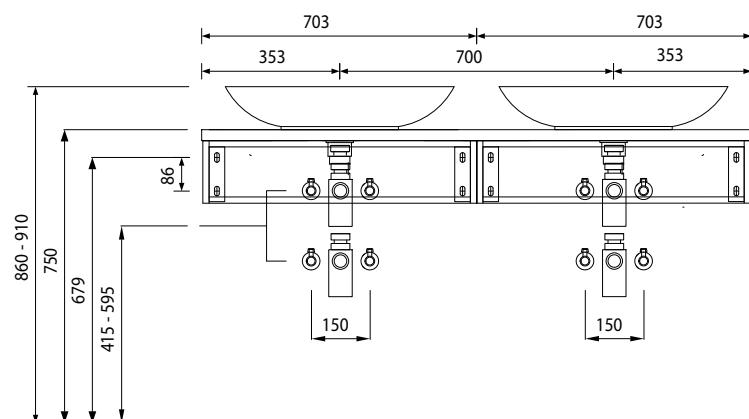
Technical modifications (+/- 5mm) and flatness modifications (DIN 18202) are subject of the usual material-specific modifications for construction materials, based on DIN 18202.

Program 053 - dimensional drawings

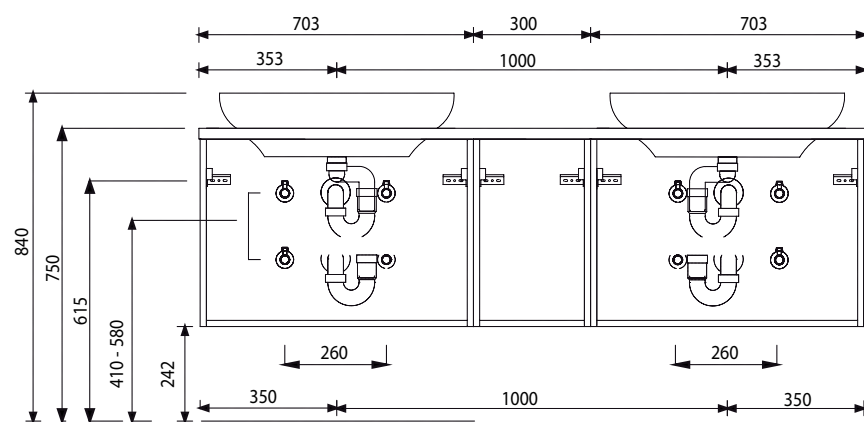
2 x WTA 0506 + 2 x WUA 3370 P4



2 x WTA 0506 + 2 x WUA 1170 P4



2 x WTA 1104 + 2 x WUA 3370 P4 +
UTA 3630 P4

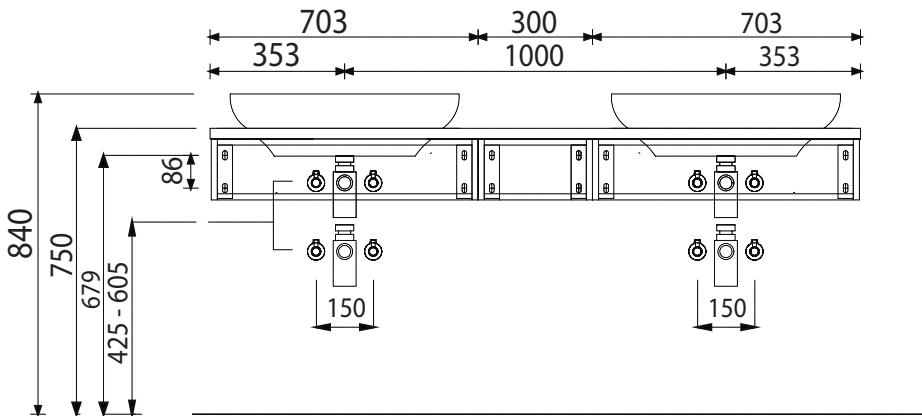


Modifications:

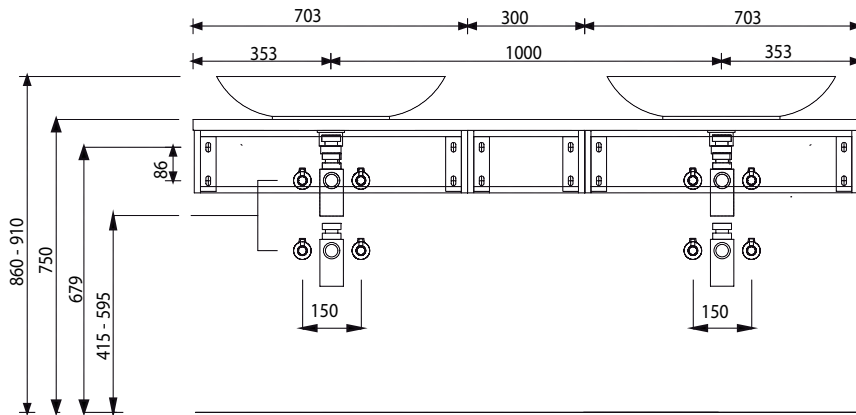
Technical modifications (+/- 5mm) and flatness modifications (DIN 18202) are subject of the usual material-specific modifications for construction materials, based on DIN 18202.

Program 053 - dimensional drawings

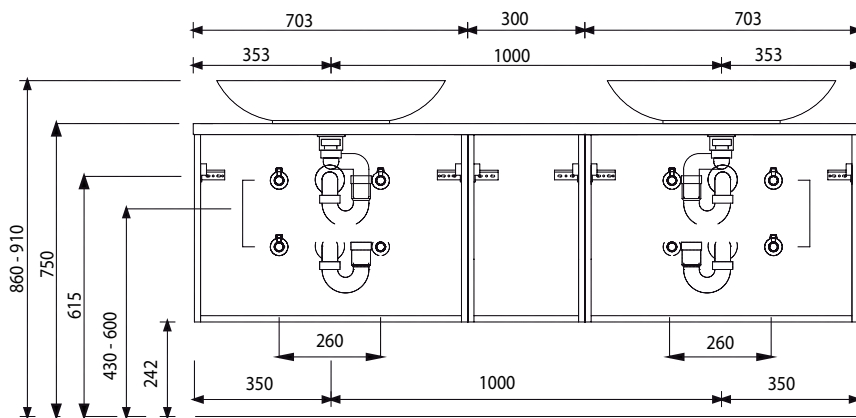
2 x WTA 1104 + 2 x WUA 1170 P4 +
UTA 1130 P4



2 x WTA 0506 + 2 x WUA 1170 P4 +
UTA 1130 P4



2 x WTA 0506 + 2 x WUA 3370 P4 +
UTA 3630 P4



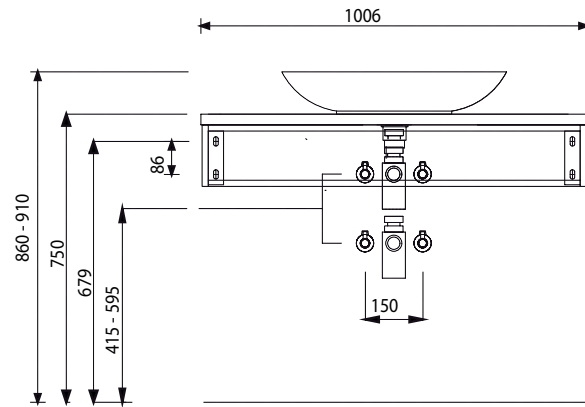
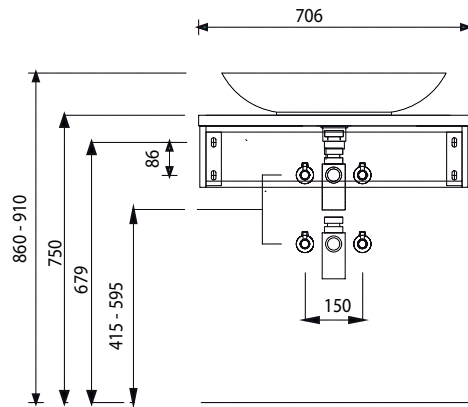
Modifications:

Technical modifications (+/- 5mm) and flatness modifications (DIN 18202) are subject of the usual material-specific modifications for construction materials, based on DIN 18202.

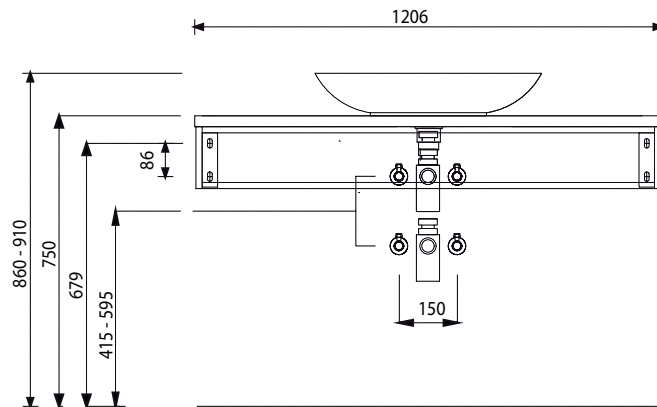
Program 053 - dimensional drawings

WTA 0506 + WUA 1170 P4

WTA 0506 + WUA 1110 P4

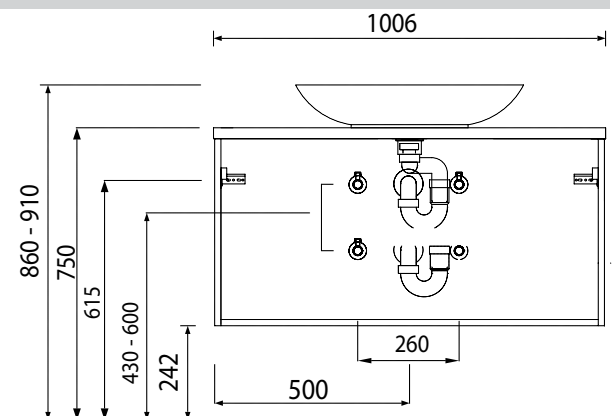
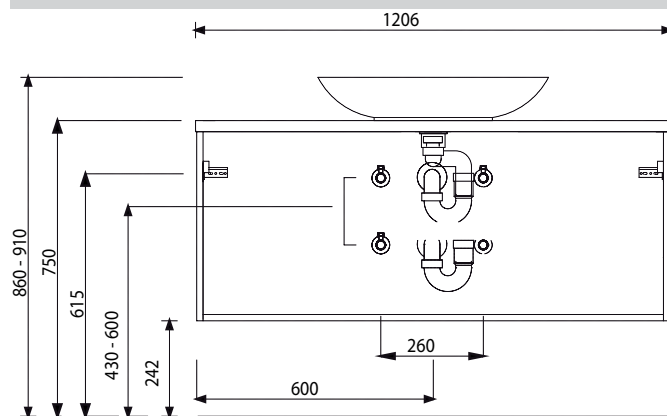


WTA 0506 + WUA 1112 P4



WTA 0506 + WUA 3312 P4

WTA 0506 + WUA 3310 P4



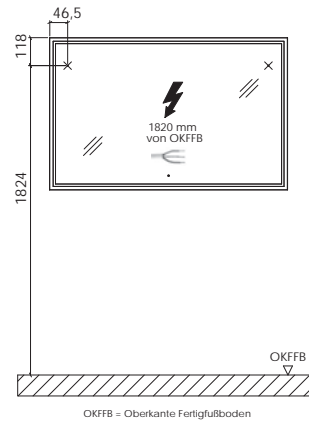
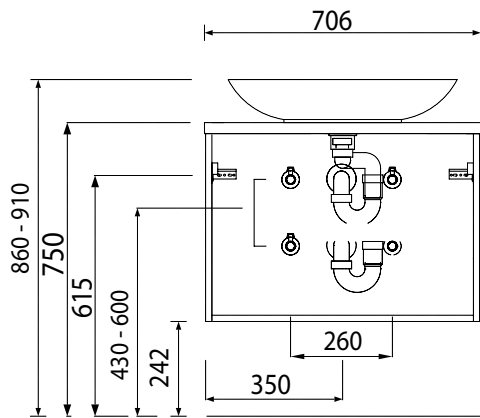
Modifications:

Technical modifications (+/- 5mm) and flatness modifications (DIN 18202) are subject of the usual material-specific modifications for construction materials, based on DIN 18202.

Program 053 - dimensional drawings

WTA 0506 + WUA 3370 P4

FSB 45xx 01



Modifications:

Technical modifications (+/- 5mm) and flatness modifications (DIN 18202) are subject of the usual material-specific modifications for construction materials, based on DIN 18202.